



BRYK
WOODWORKING
ENGINEERING

WOODWORKING TOOLS
CATALOG 2017





Dear Sir or Madam,

Dear friends

We would like to offer you professional tools for material processing used in the furniture industry, and for woodworking as well as excellent after-sales service and technical support for its customers at each stage of the order process.

The production plant is located in economically attractive part of Central Europe in Poland.

We have state-of-the-art manufacturing equipment and cutting-edge construction and technological facilities.

We have more than 16-year of experience in providing customers with highly specialized tools for material processing, professional services and technical support which makes our company trustworthy business partner.

We offer our customers a wide range of tools diamond tools, routers, drills bits, CNC holders and collets, circular saw blades, special custom tools.

Yours sincerely



BRYK continuously increases its production potential and the quality of the services it provides by investing in innovative technologies, machinery and equipment. A significant share of the company's investments is made R&D, which allows it to keep up with major European players in the industry.

PART I		
INTRODUCTION	_____	3
PART II		
DIAMOND TOOLS	_____	7
PART III		
SPIRAL ROUTER BITS	_____	29
PART IV		
DRILLS BITS	_____	37
PART V		
HOLDERS & COLLETS	_____	53
PART VI		
TECHNICAL INFORMATIONS & TOOL SELECTION	_____	65

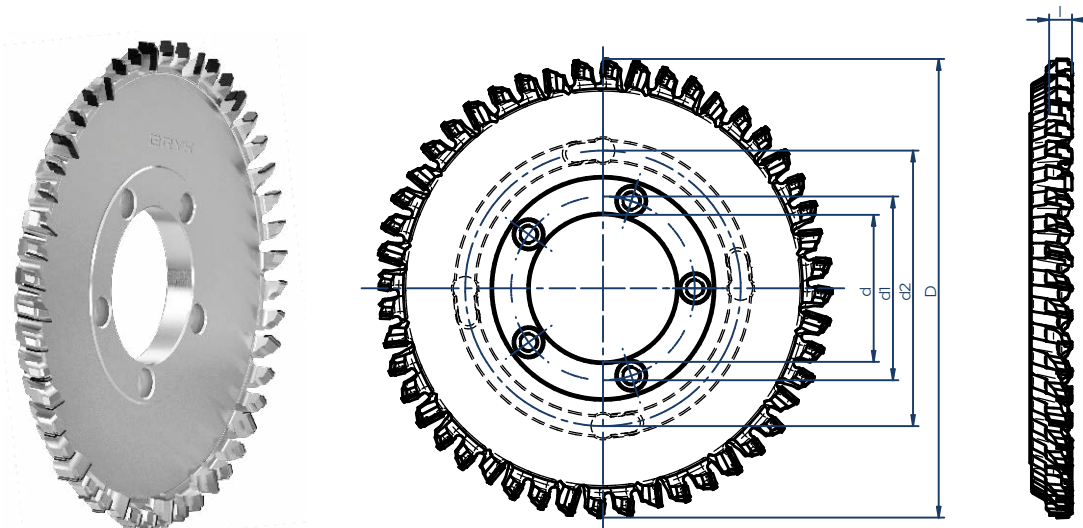


PART II DIAMOND TOOLS



FormatehFinisch topline HOGGERS

On double end tenoner machines for complete range of feed rates, depending on the type of job, for formatting rough or covered chipboard (melamine, laminate, paper) and veneered panels. Special tooth design for finish gives extremely high quality of cut. Exceptional tooth form causes possibility to adjust settings and in effect extremely long live. Also for **very high feed-speeds**.



D	L	d	d ₁	d ₂	Z	Code No.
250	12	60	100		48	GF2504860401 P/L
250	12	60		130	48	GF2504860201 P/L
250	12	80	100		48	GF2504880101 P/L
250	12	80		150	48	GF2504880201 P/L
250	12	80	100	150	48	GF2504880301 P/L
250	12	100	130		48	GF2504800101 P/L



Clamping :

Mounting flanges

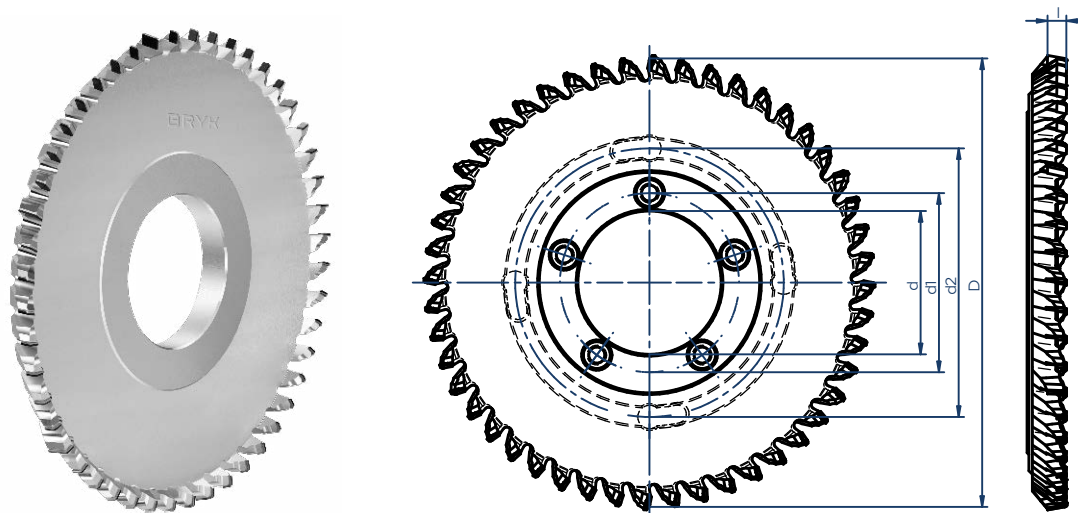
Quick Clamping System 160/192

Hydro Clamping hogger

Hydro Clamping with hexagonal adapter bottom

Compact HOGGERS FormatST03

On double end tenoner machines for complete range of feed rates, depending on the type of job, for formmating rough or covered (melamine, laminate, paper) and veneered panels.
Optimized shape, design, and angles of the tooth gives high quality cut and extremely long live.
Also for **high feed-speeds**.



D	L	d	d ₁	d ₂	Z	Code No.
250	11	60	100		48	GF2504860401 P/L
250	11	60		130	48	GF2504860201 P/L
250	11	80	100		48	GF2504880101 P/L
250	11	80		150	48	GF2504880201 P/L
250	11	80	100	150	48	GF2504880301 P/L
250	11	100	130		48	GF2504800101 P/L



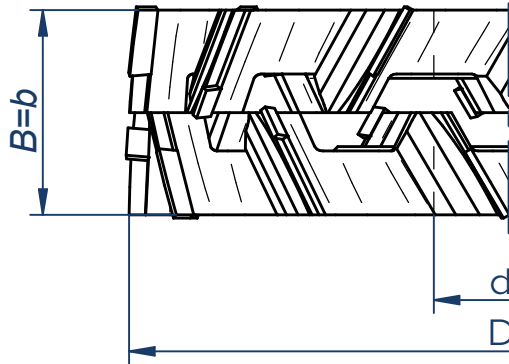
Clamping:

- Mounting flanges
- Quick Clamping System 160/192
- Hydro Clamping hogger
- Hydro Clamping with hexagonal adapter bottom

Adjustable finishing milling CUTTERS

Adjustable CUTTERS with the rings on double end tenoner and edge banding machines for milling rough or covered chipboard as (malamine, laminate, paper) and veneered panels.

Opposing shear angle ideal for finish cut and possibility to adjust gives in effect long live.



D	B max	b min	d	Z	Code No.
180	26	18	35	6+6	NPS180123501
180	36	30	35	12+12	NPS180243504
180	42	30	35	12+12	NPS180243505
180	42	30	40	12+12	NPS180244001
180	48	32	35	12+12	NPS180243507
200	36	30	35	12+12	NPS200243501
200	36	30	40	12+12	NPS200244001
200	48	32	40	12+12	NPS200244002
200	36	30	40	16+16	NPS200324001



Clamping :

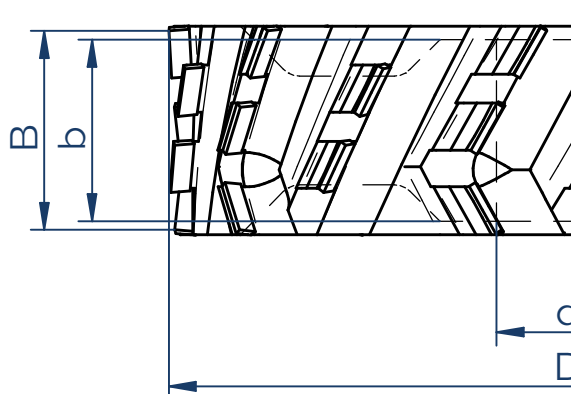
Direct on spindles

Hydro Clamping adjustable system

Hydro Clamping with hexagonal adapter bottom

Finishing milling CUTTERS

CUTTERS on double end tenoners and edge banding machines for complete range of feed rates, depending on the type of job, for formatting rough or covered chipboard as (melamine ,laminate, paper) chipboard and veneered panels .
Optimized angles of the tooth gives high quality cut and extremely long live.



D	B	b	d	Z		Code No.
180	34	36	36	6+6	symertical	NPL180243501
180	44	46	35	6+6	symertical	NPL180243502
180	34	36	40	6+6	symertical	NPL180244003
180	44	46	40	6+6	symertical	NPL180244002
180	44	48	60	6+6	symertical	NPL180246001
180	63	65	40	6+6	a-symertical	NPL180304001L/R
180	42	42	35	8+8	symertical	NPL180323501
180	44	46	35	8+8	a-symertical	NPL180403501L/R
180	44	64	60	8+8	a-symertical	NPL180406001L/R
180	64	66	60	8+8	a-symertical	NPL180646001L/R
200	42	42	35	6+6	symertical	NPL200243501
200	42	42	40	6+6	symertical	NPL2002440010
200	63	65	60	6+6	a-symertical	NPL200304001L/R
200	42	42	40	8+8	symertical	NPL200304001L/R



Clamping:

Mounting flanges

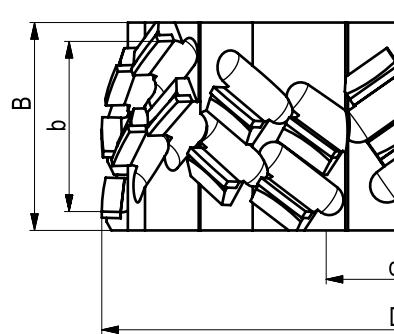
Quick Clamping System 160/192

Hydro Clamping hogger

Hydro Clamping with hexagonal adapter bottom

Adjustable "Vtech" jointing CUTTERS

Adjustable "Vtech" CUTTERS with the rings on double end tenoners and edge banding machines for complete range of feed rates, depending on the type of job, for formatting rough or covered chipboard as (malamine, laminate, paper) chipboard and veneered panels. Very aggressive shape, design, and angles of the tooth gives high quality cut. And possibility to adjust gives in effect long live.



D	B max	b min	d	Z	Code No.
125	33	23	30	5	NPS12503001
125	50	36	30	5	NPS125403001
150	35	25	30	6	NPS150243002
180	38	28	35	6	NPS180363501



Clamping:

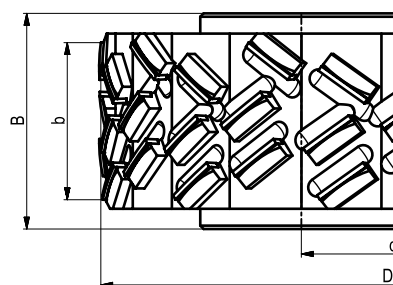
Direct on spindles

Hydro Clamping adjustable system

Hydro Clamping with hexagonal adapter bottom

"Vtech" jointing CUTTERS

"Vtech" CUTTERS on double end tenoners and edge banding machines for complete range of feed rates, depending on the type of job, for formatting rough or covered chipboard as (malamina, laminate, paper) and veneered panels. Very aggressive shape, design, and angles of the tooth gives high quality cut and extremely long live.



D	B	b	d	Z		Code No.
125	34	60	30	4	symetrical	NPL125243007
150	44	60	30	4	symetrical	NPL125323001
180	34	80	30	6	symetrical	NPL150303001
180	36	80	60	11	a-symetrical	NPL180556001L/P
250	44	80	60	11	a-symetrical	NPL180666001L/P
180	58	100	60	12	a-symetrical	NPL1801086001L/P



Clamping :

Direct on spindles

Quick Clamping System 160/192

Hydro Clamping with hexagonal adapter bottom

Adjustable jointing CUTTERS

Adjustable CUTTERS with the rings on edge banding machines for milling rough or covered chipboard as (malamine, laminate, paper) chipboard.

Opposing shear angle ideal for finish cut and possibility to adjust gives in effect long live.



D	B max	b min	d	Z	Code No.
100	46	34	30	3+3	NPS100063001
125	38	26	30	6+6	NPS125123007
125	36	26	30	6+6	NPS125123008
125	46	32	30	6+6	NPS125123011
140	38	26	30	10+10	NPS140203001
150	38	26	30	6+6	NPS150123003
150	48	38	30	6+6	NPS150243001

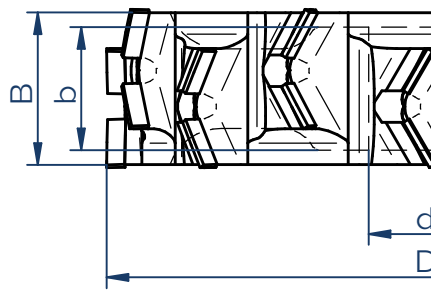


Clamping :

Direct on spindles

Jointing CUTTERS

Jointing CUTTERS on edge banding machines for milling rough or covered chipboard as (malamine ,laminate, paper) chipboard.
Opposing shear angle ideal for finish cut and long live



D	B max	b min	d	Z	Code No.
100	36	38	30	3+3	NPL100163003
125	36	38	30	3+3	NPL125123008
125	44	48	30	3+3	NPL125123007
125	26	30	30	6+6	NPL125243004
125	36	38	30	6+6	NPL125243001
150	36	38	30	6+6	NPL150243001
150	40	42	130	6+6	NPL125243002

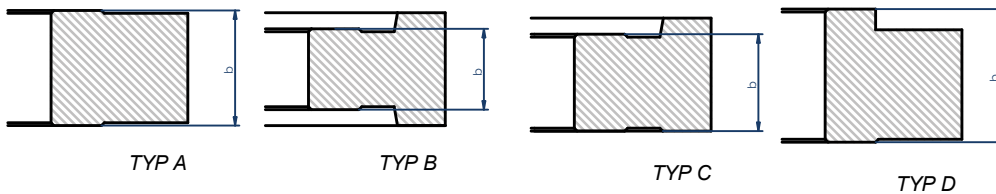
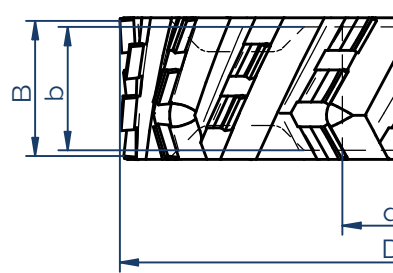


Clamping:

Direct on spindles

Jointing CUTTERS

Jointing CUTTERS on edge banding machines for milling
rough or covered chipboard as (malamine, laminate, paper) chipboard



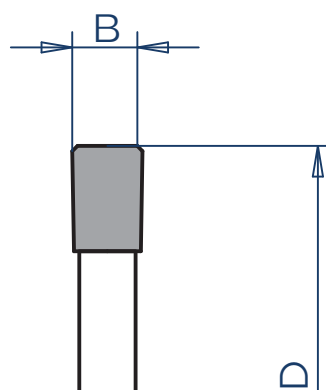
D	B	b	d	Z		Code No.
60	64	64	25	2+2	a-symetrical /A	NPL060142501L/R
85	45	48	30	3+3	a-symetrical /A	NPL085153003L/R
100	34	36	30	3+3	a-symetrical /A	NPL100093002L/R
100	48	40,6	30	3+3	a-symetrical /C	NPL100153003L/R
100	48	25	30	2+2	a-symetrical /B	NPL100103002L/R
100	63	25	30	2+2	a-symetrical /C	NPL100123002L/R
125	63	40,6	30	3+3	a-symetrical /C	NPL125243007
125	34	36	30	3+3	a-symetrical /C	NPL125123004
125	63	40,6	30	3+3	a-symetrical /B	NPL125183002L/R
125	48	40,6	30	3+3	a-symetrical /B	NPL125153004L/R



Clamping :
Direct on spindles

Grooving CUTTERS

Grooving CUTTERS on double end tenoners and edge banding machines.
Number of teeth depends on the feed rates, material and cut quality.



D	B	b	d	Z	Code No.
125	3,2	2,2	30	24	PD125243005
150	3,2	2,2	30	36	PD150363008
180	3,2	2,2	30	42	PD180423001
200	3,2	2,2	30	36	PD200363002
150	3,5	2,2	40	24	PD150244002
180	3,5	2,2	80	42	PD180428002
100	4,0	3,2	22	18	PD100182201
120	4,0	3,2	25	24	PD120242502
150	4,0	3,2	30	36	PD150363001
180	4,0	3,2	80	42	PD180428002
200	4,0	3,2	80	36	PD200368001



Clamping :

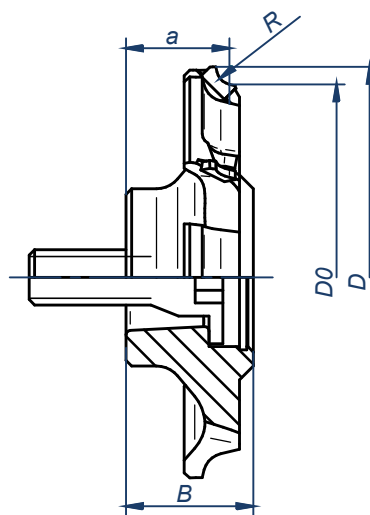
Direct on spindles

Mounting flanges

Hydro Clamping with hexagonal adapter bottom

Edge Rounding CUTTERS

Edge Rounding CUTTERS on edge banding machines
for rounding/chamfering edge bands.



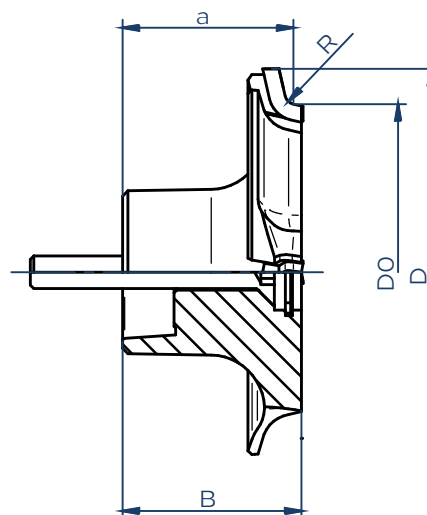
D	Do	B	a	Z	R	Code No.	
76	70	23	17,5	6	1	HSK25R	NRL076062503L/R
76	70	23	18,5	6	2	HSK25R	NRL076062502L/R
76	70	23	19,5	6	3	HSK25R	NRL076062501L/R
84	70	23	17,5	6	1	HSK25R	NRL084062501L/P
84	70	23	18,5	6	2	HSK25R	NRL084062502L/P
84	70	23	19,5	6	3	HSK25R	NRL084062503L/P



Clamping :
Agregate FF

Edge Rounding CUTTERS

Edge Rounding CUTTERS on edge banding machines
for rounding/chamfering edge bands.



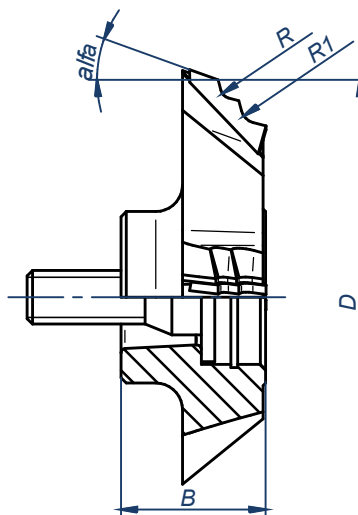
D	Do	B	a	Z	R		Code No.
75	62	33	31,5	4	1	HSK25R	NRL075043202L/R
75	62	33	31,5	4	2	HSK25R	NRL075043201L/R
75	62	33	31,5	4	3	HSK25R	NRL075043203L/R
75	62	33	31,5	4	1	HSK25R	NRL075063201L/R
75	62	33	31,5	4	2	HSK25R	NRL075063202L/R
75	62	33	31,5	4	3	HSK25R	NRL075063203L/R



Clamping :
Agregate FF

Edge Rounding CUTTERS Multiprof

Edge Rounding CUTTERS on edgebanding machines
for rounding/chamfering edge bands



D	B	alfa	R	R1	Z	Code No.
85	27	20	2	3	4	HSK25R NRL085042501L/R



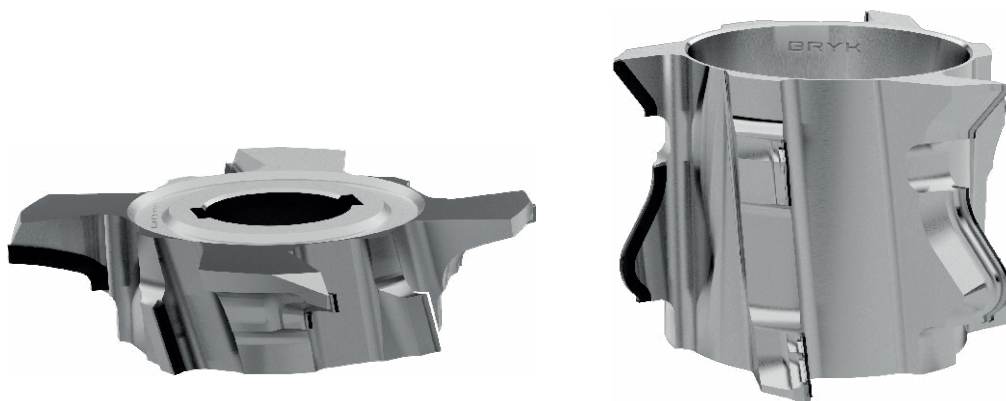
Clamping :
Agregate FF

Profile CUTTERHEADS

Profile CUTTERHEADS for profiling materials.

Profiling Cutterheads are on request.

Number of teeth depends on the feed rates, material and cut quality.



We need to know

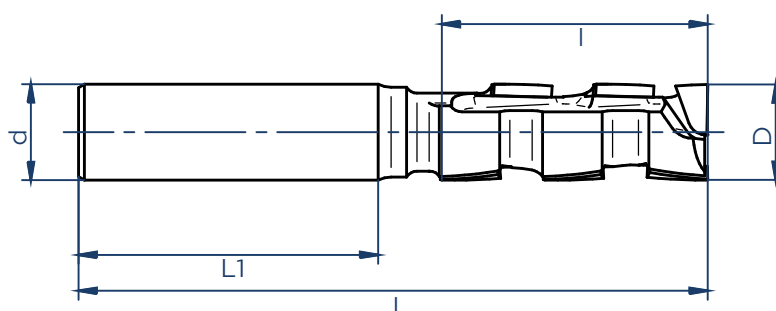
Diameter max.	D
Spindle diameter	d
Profile	
RPM	
Type of material	
feed of rate	
Direction of work	



CNC Routers

For jointing, rabbeting and grooving in rough or covered chipboard as (malamine , laminate, paper) chipboard and veneered panels.

Optimized angles on top and bottom gives good quality cut long edge lives.
Feed rates up to 12 m/min.



D	I	L	L1	d	Z	Code No.
12	26,0	50	82	12	1+1	TPE012041201L/R
12	36,0	50	100	12	1+1	TPE012051201L/R
16	26,0	50	82	16	1+1	TPE016041601L/R
16	36,0	50	100	16	1+1	TPE016051601L/R
16	44,0	50	105	16	1+1	TPE016061601L/R
18	36,0	50	100	18	1+1	TPE018051801L/R
18	44,0	50	105	18	1+1	TPE018061801L/R
20	36,0	50	100	20	1+1	TPE020052001L/R
20	44,0	50	105	20	1+1	TPE020062001L/R
22	36,0	50	100	22	1+1	TPE022052201L/R



Clamping :

Collets

Possible to change work dimension and chuck

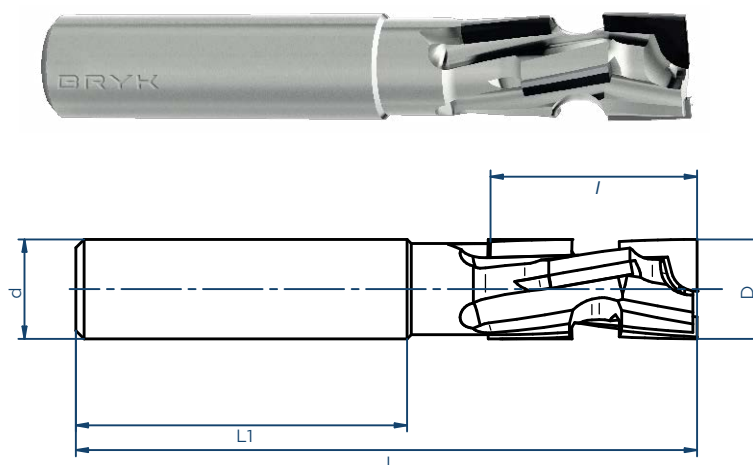
CNC Routers

For jointing, rabbeting and grooving in rough or covered chipboard as (malamine, laminate, paper) chipboard and veneered panels.

Optimized angles on top and bottom gives good quality cut long edge lives.

Feed rates up to for jointing 20 m/min

Feed rates up to 12 m/min.



D	I	L	L1	d	Z	Code No.
12	25,0	75	40	12	2+2	TP012071201L/P
12	32,0	80	40	12	2+2	TP012071203L/P
16	26,0	90	50	20	2+2	TP016071609L/P
16	36,0	100	50	20	2+2	TP016071610L/P
20	26,0	90	50	20	2+2	TP020072006L/P
20	36,0	100	50	20	2+2	TP020072007L/P
20	42,0	105	50	20	2+2	TP020092001L/P



Clamping :

Collets

Hydro Grip

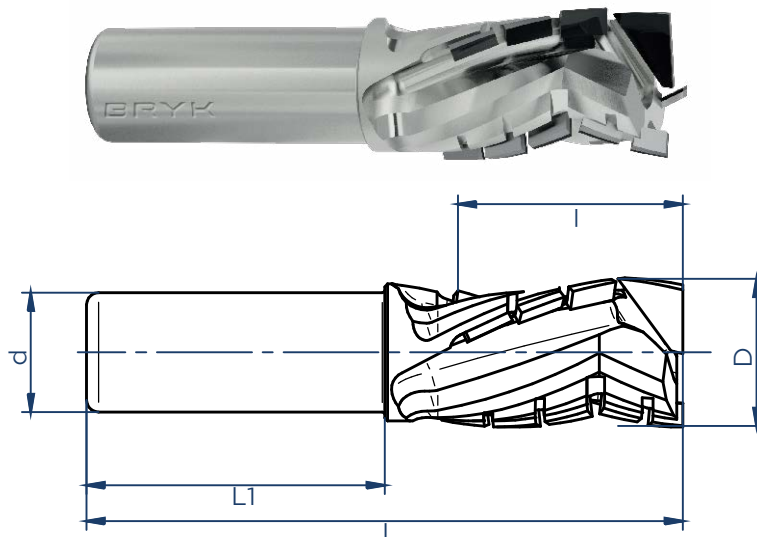
Termo Grip

Possible to change work dimension and chuck

CNC Routers

For jointing, rabbeting and grooving in rough or covered chipboard as (malamine, laminate, paper) chipboard and veneered panels.

Optimized angles on top and bottom gives good quality cut long edge lives.
Feed rates up to 28 m/min.



D	I	L	L1	d	Z	Code No.
12	25,0	75	40	12	3+3	TP012121201L/P
12	34,0	82	40	12	3+3	TP012121203L/P
12	36,0	100	50	25	3+3	TP025132501L/P
12	48,0	110	50	25	3+3	TP025162503L/P
12	53,0	115	50	25	3+3	TP025132501L/P
12	64,0	125	50	25	3+3	TP025132501L/P



Clamping :

Collets

Hydro Grip

Termo Grip

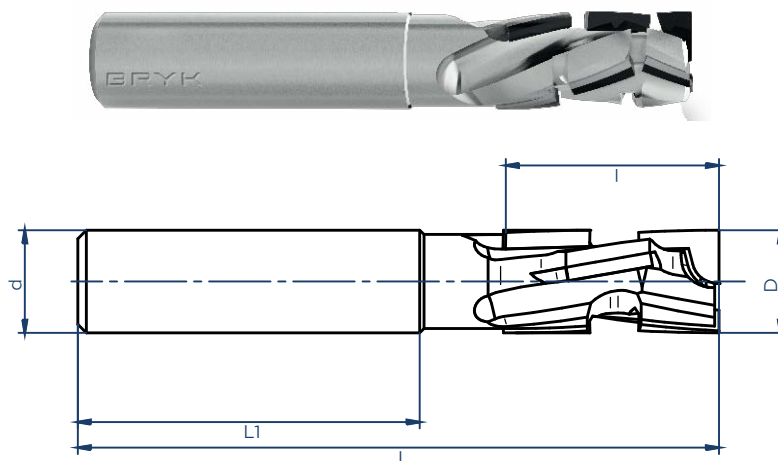
Possible to change work dimension and chuck

CNC Routers Nesting

For panel sizing in Nesting Technology.

Optimized angles on top and bottom gives good quality cut long edge lives.

Feed rates up to 22 m/min.



D	I	L	L1	d	Z		Code No.
12	25,0	75	40	12	3+3	positive	TP012121201L/P
12	25,0	75	40	12	3+3	negative	TP012121203L/P
12	34,0	82	40	12	3+3	positive	TP025132501L/P



Clamping :

Collets

Hydro Grip

Termo Grip

Possible to change work dimension and chuck

Profile Router Cutters

Profile Routers for profiling materials.

Profiling Cutterheads are on request.

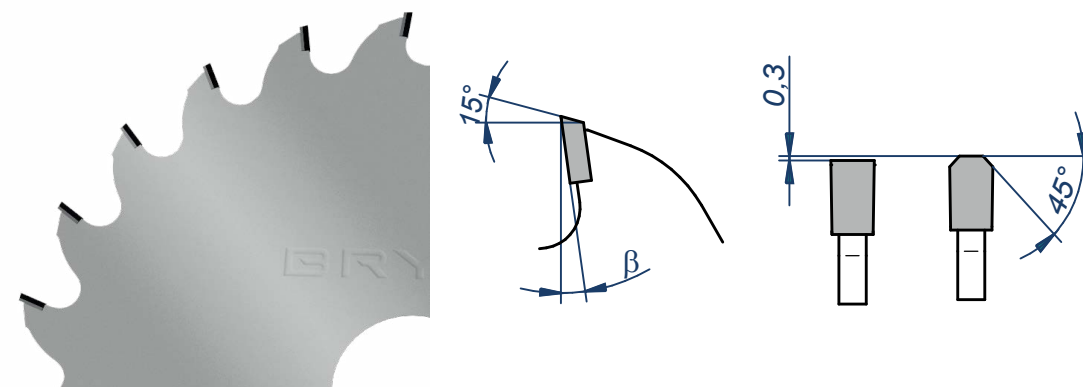


We need to know

Diameter max.	D
Chuck diameter	d
Profile	
RPM	
Type of material	
feed of rate	
Direction of work	



Circular Saw Blades



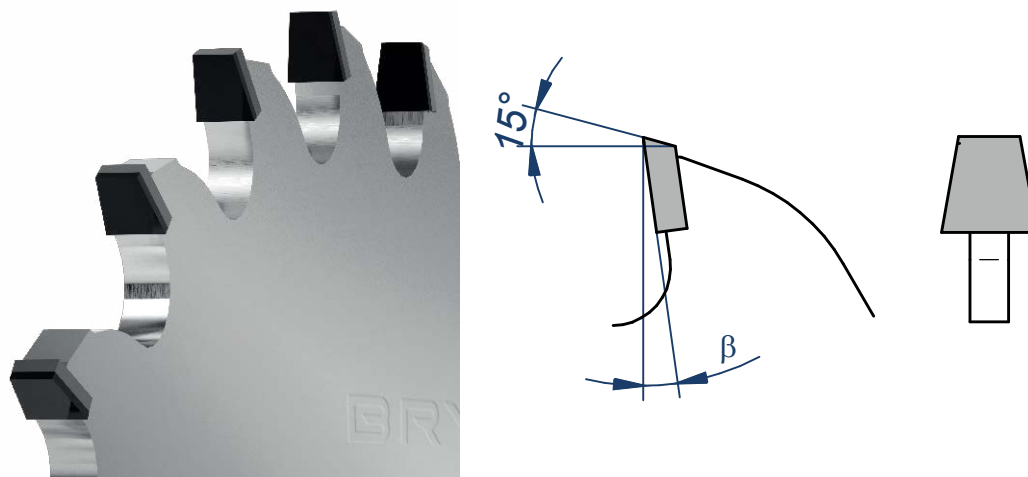
D	B	b	d		Z	β	Code No.
300	4,4	3,0	30	Gabbiani	48	14	PDRD5012001
300	4,4	3,0	65	Selco	48	14	PDRD5012019
300	4,4	3,0	30	Gabbiani	60	14	PDRD5012002
300	4,4	3,0	65	Selco	60	14	PDRD5012021
300	4,4	3,0	30	Gabbiani	72	14	PDRD5012003
300	4,4	3,0	65	Selco	72	14	PDRD5012023
320	4,4	3,0	65	Selco	60	14	PDRD5012025
350	4,4	3,0	60	Holzma	54	14	PDRD5012026
350	4,4	3,0	60	Holzma	72	14	PDRD5012030
350	4,4	3,0	60	Holzma	84	14	PDRD5012034
360	4,4	3,0	65	Selco	54	14	PDRD5012038
360	4,4	3,0	65	Selco	72	14	PDRD5012040
380	4,4	3,0	50	Giben	54	14	PDRD5012043
380	4,4	3,0	60	Holzma	54	14	PDRD5012044
380	4,4	3,0	50	Giben	72	14	PDRD5012048
400	4,4	3,2	60	Holzma	60	14	PDRD5012051
400	4,4	3,2	60	Holzma	72	14	PDRD5012054
400	4,4	3,2	60	Holzma	84	14	PDRD5012057
380	4,8	3,5	60	Holzma	72	14	PDRD5012067
420	4,8	3,5	60	Holzma	60	14	PDRD5012068



Clamping :

Selected for machine type

Conical Scoring Saw blades



D	B	b	d		Z	β	Code No.
80	3,2/4,4	2,2	20	Casadei	12	6	PDRD5006001
80	3,2/4,4	2,2	22	-	12	6	PDRD5006016
90	3,2/4,4	2,2	20	-	12	6	PDRD5006002
90	3,2/4,4	2,2	22	-	12	6	PDRD5006017
100	3,2/4,4	2,2	20	Schelling	20	6	PDRD5006003
100	3,2/4,4	2,2	22	-	20	6	PDRD5006018
115	3,2/4,4	2,2	20	-	24	6	PDRD5006004
120	3,2/4,4	2,2	20	-	24	6	PDRD5006005
120	3,2/4,4	2,2	22	-	24	6	PDRD5006019
125	3,2/4,4	2,2	20	Panhans	24	6	PDRD5006020
125	3,2/4,4	2,2	22	Martin	24	6	PDRD5006021
120	3,2/4,7	2,2	20	SCM	24	6	PDRD5006045
125	3,2/4,7	2,2	20	-	24	6	PDRD5006006
150	3,2/4,7	2,2	30	-	24	6	PDRD5006009
150	3,2/4,7	2,2	30	-	30	6	PDRD5006011



Clamping:

Selected for machine type

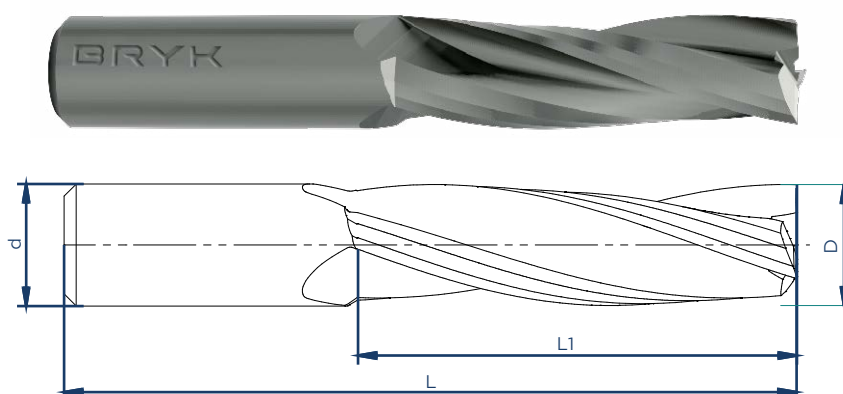
PART III SPIRAL RAUTER BITS



Solid carbide spiral Finishing Router Bits

On CNC machines. For finishing cutting in solid wood and and many types of boards for cutting in opening and contours.

Positive spiral for strong and stabile fastening workpieces side up. Thanks to positive spiral router had optimal upward chip evacuation.



D	L	L1	d	Z	Code No.
6	60	25	6	3	HTG10030606025
8	80	25	8	3	HTG10030808025
8	80	32	8	3	HTG10030808032
10	100	32	10	3	HTG10031010032
10	100	42	10	3	HTG10031010042
12	80	32	12	3	HTG10031208032
12	90	42	12	3	HTG10031209042
12	100	42	12	3	HTG10031210042
12	100	52	12	3	HTG10031210052
16	90	42	16	3	HTG10031609042
16	100	52	16	3	HTG10031610052
16	120	72	16	3	HTG10031612072
20	100	52	20	3	HTG10032010052
20	120	72	20	3	HTG10032012072
20	150	102	20	3	HTG100320150102



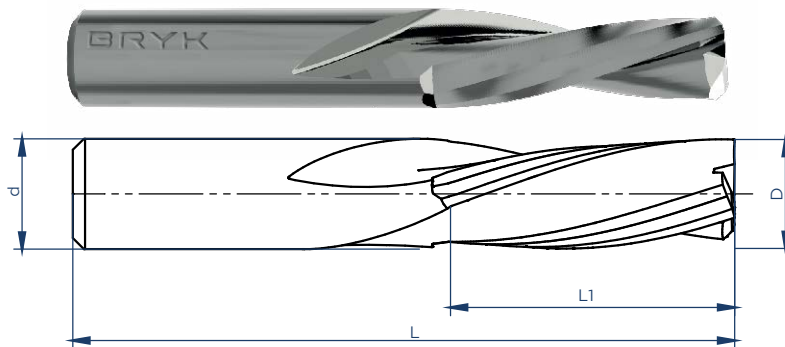
Possibility to design special constructions on request

Solid carbide spiral Finishing Router Bits

On CNC machines. For finishing cutting in solid wood and and many types of boards for cutting in opening and contours.

Negative spiral to workpieces side up

Thanks to positive spiral router had optimal upward chip evacuation.



D	L	L1	d	Z	Code No.
6	60	15	6	3	HTG20030606015
8	60	25	6	3	HTG20030606025
8	80	25	8	3	HTG20030808025
8	80	32	8	3	HTG20030808032
10	100	32	10	3	HTG20031010032
10	100	42	10	3	HTG20031010042
12	80	32	12	3	HTG20031208032
12	100	42	12	3	HTG20031210042
16	100	42	16	3	HTG20031610042
16	100	52	16	3	HTG20031610052
20	100	52	20	3	HTG20032010052
20	120	72	20	3	HTG20032012072

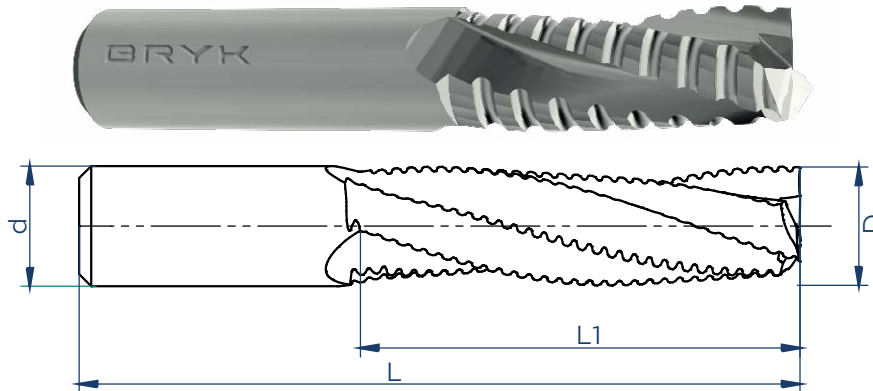


Possibility to design special constructions on request

Solid carbide spiral Chipbreaker Router Bits

On CNC machines. For rough cutting and hard work in solid wood and and many types of boards for cutting in opening and contours.

Positive spiral for strong and stabile fastening workpieces side up.
Thanks to positive spiral router had optimal upward chip evacuation



D	L	L1	d	Z	Code No.
8	80	32	8	3	HTR10030808032
10	80	32	10	3	HTR10031008032
10	100	42	10	3	HTR10031010042
12	100	42	12	3	HTR10031210042
12	100	52	12	3	HTR10031210052
16	100	42	16	3	HTR10031610042
16	100	52	16	3	HTR10031610052
16	100	72	16	3	HTR10031612072
20	120	70	20	3	HTR10032012070
20	120	72	20	3	HTR10032012072
20	150	72	20	3	HTR10032015072
25	125	80	25	3	HTR10032512580



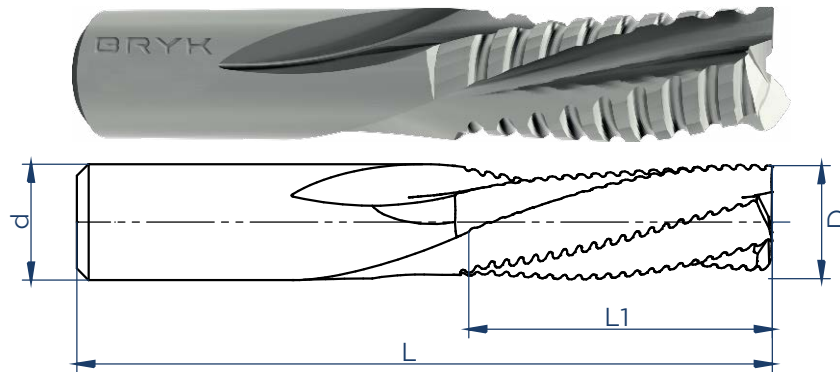
Possibility to design special constructions on request

Solid carbide spiral Chipbreaker Router Bits

On CNC machines. For rough cutting and hard work in solid wood and many types of boards for cutting in opening and contours.

Negative spiral to workpieces side up.

Thanks to negative spiral router had towards the bottom chip evacuation.



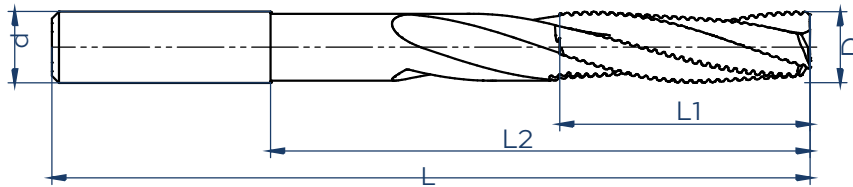
D	L	L1	d	Z	Code No.
8	80	32	8	3	HTR20030808032
10	80	32	10	3	HTR20031008032
10	100	42	10	3	HTR20031010042
12	100	52	12	3	HTR20031210052
20	100	52	20	3	HTR20032010052



Solid carbide spiral Router Bits for lock

On CNC machines for cutting of lock-cases in doors .

Positive spiral cutting edges with chip breakers for roughing cutter
Thanks to positive spiral router had optimal upward chip evacuation



D	L	L1	L2	d	Z	Code No.
14	150	45	95	14	3	HTR10030808032
16	150	50	100	16	3	HTR10031008032



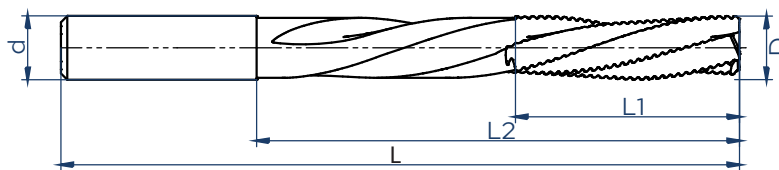
Possibility to design special constructions on request

Solid carbide spiral Chipbreaker Router Bits for lock

On CNC machines for cutting of lock-cases in doors .

Negative spiral to workpieces side up.

Cutting edges with chip breakers for roughing cutter.



D	L	L1	L2	d	Z	Code No.
14	150	50	100	8	3	HTR/G20031415050/50
14	170	50	120	10	3	HTR/G20031417050/70
16	150	50	100	10	3	HTR/G20031615050/50
16	170	55	120	12	3	HTR/G20031617055/65
18	150	60	100	20	3	HTR/G20031815060/40



Possibility to design special constructions on request

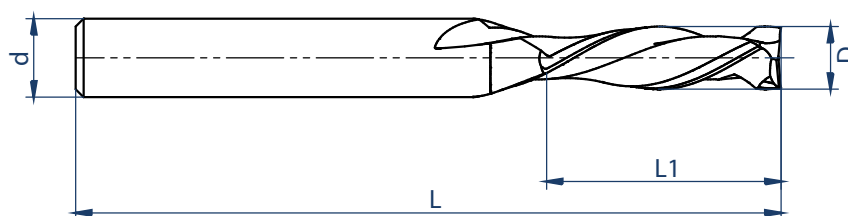
Solid carbide spiral Finishing Router Bits with double spiral

On CNC machines. For finishing cutting in solid wood and and many types of boards.

For cutting in opening and contours

Double spiral.

Thanks to shear angle optimum cutting quality in laminated panels



D	L	L1	d	Z	Code No.
8	90	30	6	2+2	VTB10-00801CM
10	90	30	8	2+2	VTB10-01001CM
12	90	35	8	2+2	VTB10-01201CM
12	100	42	10	2+2	VTB10-01202CM
1/2"	80	1-3/8"	14	2+2	VTB10-1202C/M
3/8"	80	1"	10	2+2	VTB10-3801C/M



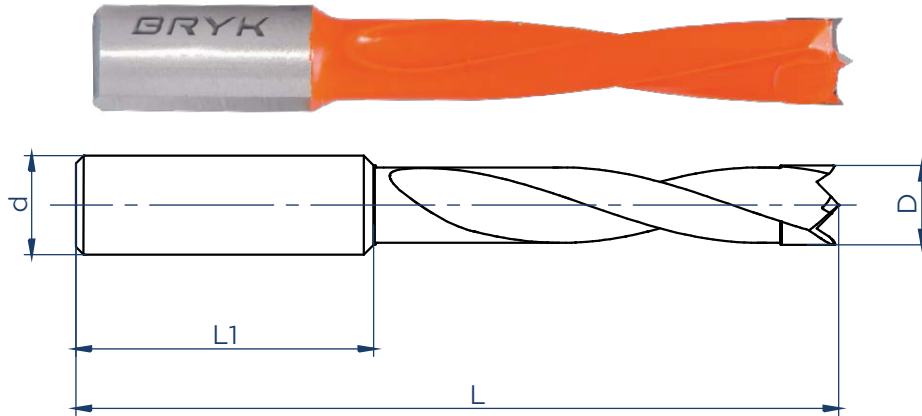
Possibility to design special constructions on request

PART VI DRILL BITS



Dowel drill bits

On automatic boring machines, portable boring machines,
for drilling of dowel holes with 2 negative teeth and centering point.
Precise length adjustment with a screw.



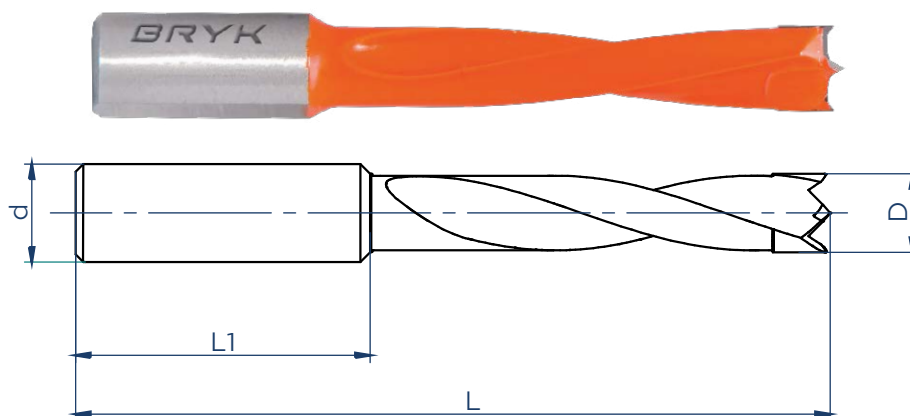
D	L	L1	d	Code No. L	Code No. R
3	57	20	10	14010357L	14010357R
4	57	20	10	14010457L	14010457R
5	57	20	10	14010557L	14010557R
6	57	20	10	14010657L	14010657R
7	57	20	10	14010757L	14010757R
8	57	20	10	14010857L	14010857R
10	57	20	10	14011057L	14011057R
12	57	20	10	14011257L	14011257R
15	57	20	10	14011557L	14011557R



Very wide range of custom drills
It is possible to order custom dimension
It is possible to order custom shank

Dowel drill bits

On automatic boring machines, portable boring machines,
for drilling of dowel holes with 2 negative teeth and centering point.
Precise length adjustment with a screw.



D	L	L1	d	Code No. L	Code No. R
3	70	20	10	14010370L	14010370R
4	70	20	10	14010470L	14010470R
5	70	20	10	14010570L	14010570R
6	70	20	10	14010670L	14010670R
7	70	20	10	14010770L	14010770R
8	70	20	10	14010870L	14010870R
10	70	20	10	14011070L	14011070R
12	70	20	10	14011270L	14011270R
15	70	20	10	14011570L	14011570R

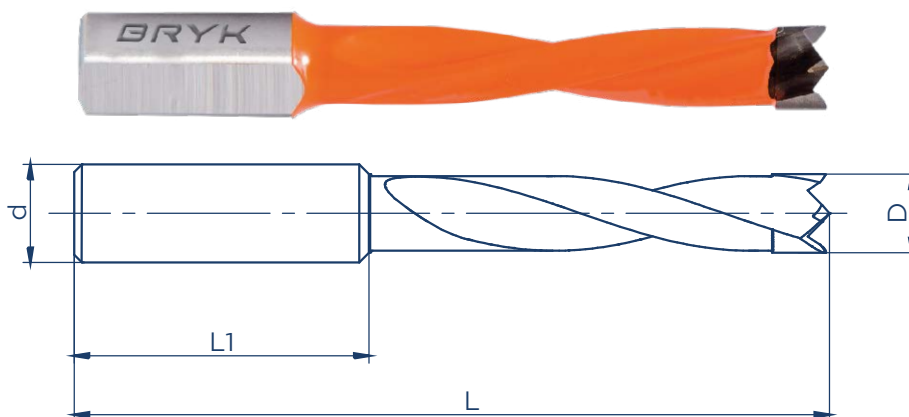


Very wide range of custom drills
It is possible to order custom dimension
It is possible to order custom shank

Dowel drill bits PREMIUM

On automatic boring machines, portable boring machines,
for drilling of dowel holes with 2 negative teeth and centering point.
Precise length adjustment with a screw.

High quality of the hole edges thanks to the special cutting teeth geometry



D	L	L1	d	Code No. L	Code No. R
4	57	20	10	14010357L	14010357R
5	57	20	10	14010457L	14010457R
6	57	20	10	14010557L	14010557R
7	57	20	10	14010657L	14010657R
8	57	20	10	14010757L	14010757R
10	57	20	10	14010857L	14010857R

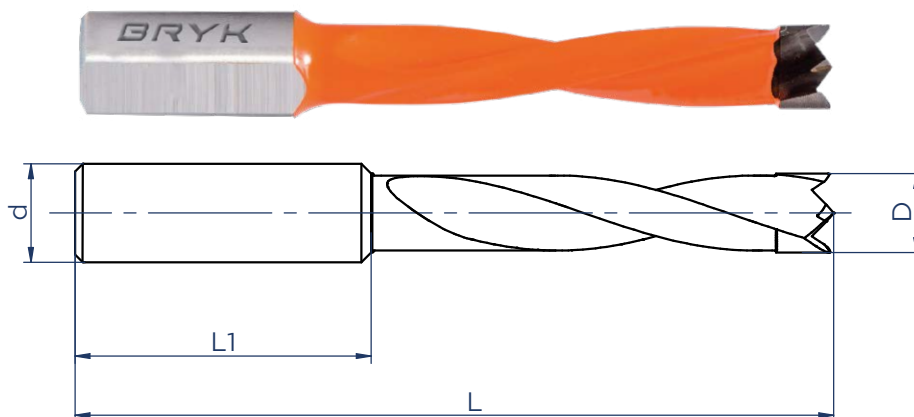


Very wide range of custom drills
It is possible to order custom dimension
It is possible to order custom shank

Dowel drill bits PREMIUM

On automatic boring machines, portable boring machines,
for drilling of dowel holes with 2 negative teeth and centering point.
Precise length adjustment with a screw.

High quality of the hole edges thanks to the special cutting teeth geometry



D	L	L1	d	Code No. L	Code No. R
4	70	20	10	11030470L	11030470R
5	70	20	10	11030570L	11030570R
6	70	20	10	11030670L	11030670R
7	70	20	10	11030770L	11030770R
8	70	20	10	11030870L	11030870R
10	70	20	10	11031070L	11031070R
12	70	20	10	11031270L	11031270R

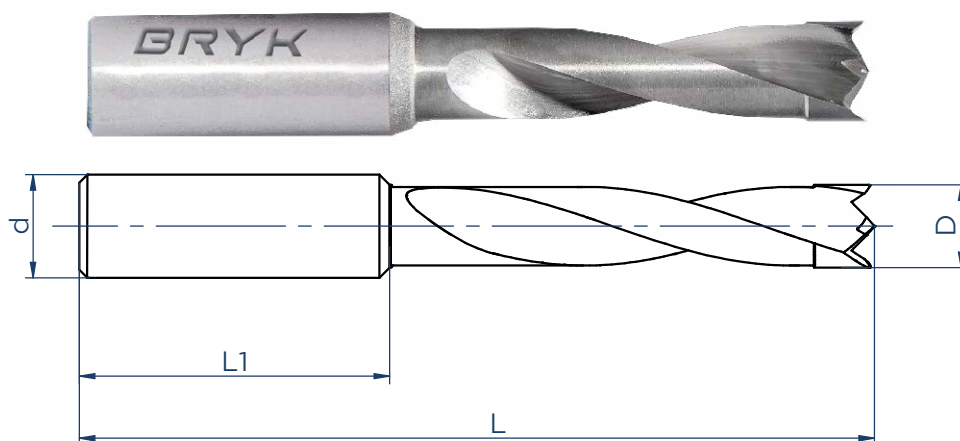


Very wide range of custom drills
It is possible to order custom dimension
It is possible to order custom shank

Dowel drill bits Solid carbide body

On automatic boring machines, portable boring machines,
for drilling of dowel holes with 2 negative teeth and centering point.
Precise length adjustment with a screw

High quality of the hole edges thanks to the special cutting teeth geometry.
Boring part made with fine-grain solid tungsten carbide.
Solid carbide body increases feed rate at constant edge quality and 4 times longer working time



D	L	L1	d	Code No. L	Code No. R
3	57	20	10	12010357L	12010357R
4	57	20	10	12010457L	12010457R
5	57	20	10	12010557L	12010557R
6	57	20	10	12010657L	12010657R
7	57	20	10	12010757L	12010757R
8	57	20	10	12010857L	12010857R

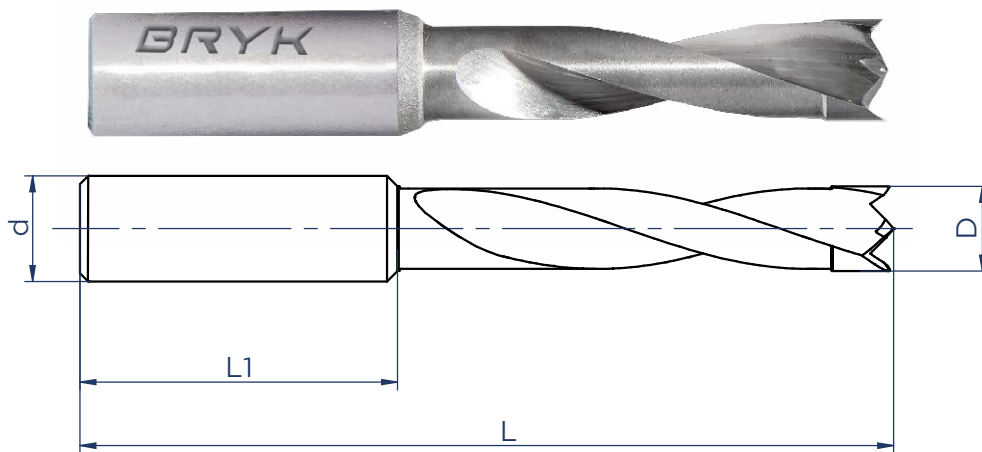


Very wide range of custom drills
It is possible to order custom dimension
It is possible to order custom shank

Dowel drill bits Solid carbide body

On automatic boring machines, portable boring machines,
for drilling of dowel holes with 2 negative teeth and centering point.
Precise length adjustment with a screw

High quality of the hole edges thanks to the special cutting teeth geometry.
Boring part made with fine-grain solid tungsten carbide.
Solid carbide body increases feed rate at constant edge quality and 4 times longer working time



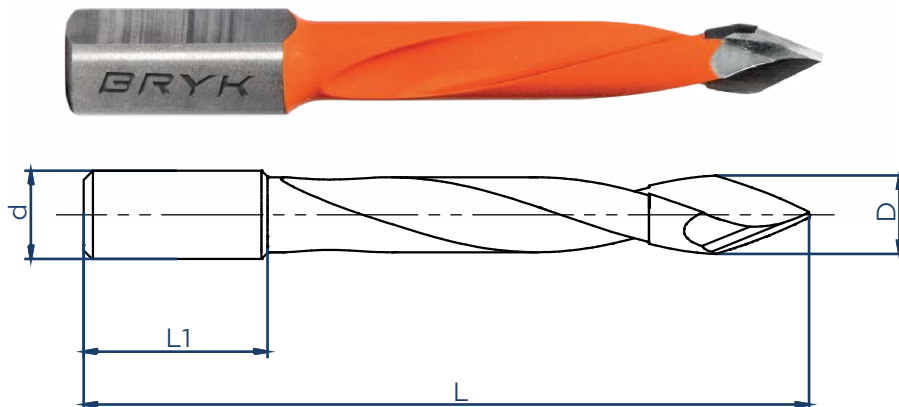
D	L	L1	d	Code No. L	Code No. R
3	70	27	10	12010370L	12010370R
4	70	27	10	12010470L	12010470R
5	70	27	10	12010570L	12010570R
6	70	27	10	12010670L	12010670R
7	70	27	10	12010770L	12010770R
8	70	27	10	12010870L	12010870R



Very wide range of custom drills
It is possible to order custom dimension
It is possible to order custom shank

Through-hole drill bits

On automatic boring machines, portable boring machines,
 2 V-point cutting edge with 60 degrees.
 Precise length adjustment with a screw.



D	L	L1	d	Code No. L	Code No. R
5	57	20	10	13030557L	13030557R
8	57	20	10	13030857L	13030857R
4	70	20	10	13030470L	13030470R
5	70	20	10	13030570L	13030570R
6	70	20	10	13030670L	13030670R
7	70	20	10	13030770L	13030770R
8	70	20	10	13030870L	13030870R
9	70	20	10	13030970L	13030970R
10	70	20	10	13031070L	13031070R
12	70	20	10	130312 70L	13031270R



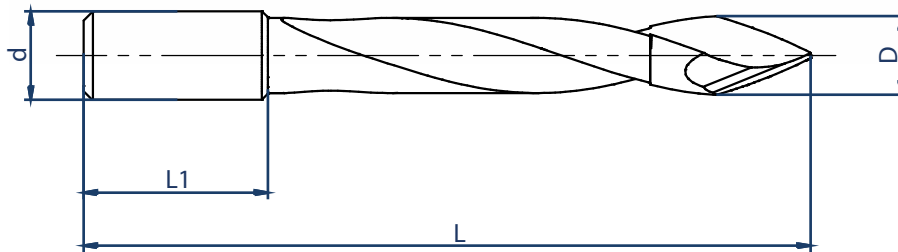
Very wide range of custom drills
 It is possible to order custom dimension
 It is possible to order custom shank

Through-hole drill bits

On automatic boring machines, portable boring machines,

2 V-point cutting edge with 60 degrees.

Precise length adjustment with a screw.



D	L	L1	d	Code No. L	Code No. R
5	57	20	10	13010557L	13010557R
8	57	20	10	13010857L	13010857R

4	70	20	10	13010470L	13010470R
5	70	20	10	13010570L	13010570R
6	70	20	10	13010670L	13010670R
7	70	20	10	13010770L	13010770R
8	70	20	10	13010870L	13010870R
9	70	20	10	13010970L	13010970R
10	70	20	10	13011070L	13011070R
12	70	20	10	130112 70L	13011270R



Very wide range of custom drills

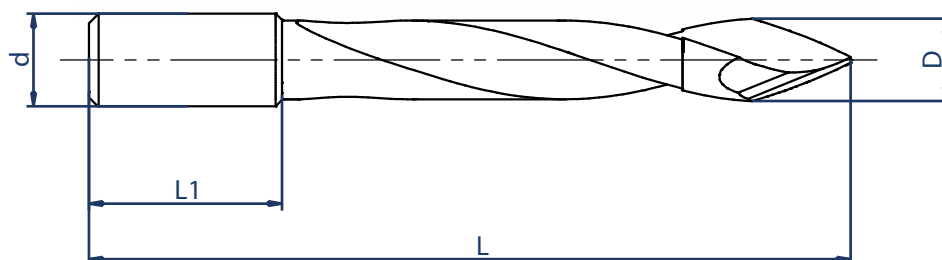
It is possible to order custom dimension

It is possible to order custom shank

Dowel drill bits Solid carbide body

On automatic boring machines, portable boring machines,
 special cutting edge geometry.
 Precise length adjustment with a screw.

High quality of the hole edges thanks to the special cutting teeth geometry.
 Boring part made with fine-grain solid tungsten carbide.
 Solid carbide body increases feed rate at constant edge quality and 4 times longer working time.



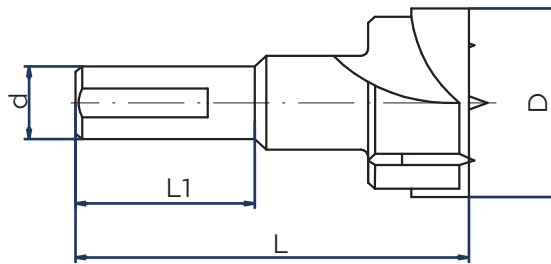
D	L	L1	d	Code No. L	Code No. R
5	57	20	10	13020557L	13020557R
6	57	20	10	13020657L	13020657R
8	57	20	10	13020857L	13020857R
4	70	20	10	13020470L	13020470R
5	70	20	10	13020570L	13020570R
6	70	20	10	13020670L	13020670R
7	70	20	10	13020770L	13020770R
8	70	20	10	13020870L	13020870R



Very wide range of custom drills
 It is possible to order custom dimension
 It is possible to order custom shank

Dowel drill bits

On automatic boring machines, portable boring machines,
for drilling of dowel holes with 2 +2 cutting teeth and centering point.
Precise length adjustment with a screw.



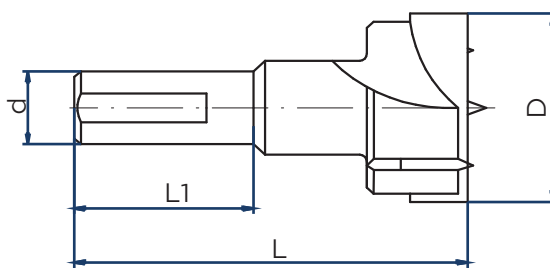
D	L	L1	d	Code No. L	Code No. R
15	57	30	10	10011557L	10011557R
18	57	30	10	10011857L	10011857R
20	57	30	10	10012057L	10012057R
22	57	30	10	10012257L	10012257R
25	57	30	10	10012557L	10012557R
26	57	30	10	10012657L	10012657R
30	57	30	10	10013057L	10013057R
35	57	30	10	10013557L	10013557R
40	57	30	10	10014057L	10014057R



Very wide range of custom drills
It is possible to order custom dimension
It is possible to order custom shank

Dowel drill bits

On automatic boring machines, portable boring machines,
for drilling of dowel holes with 2 +2 cutting teeth and centering point.
Precise length adjustment with a screw.



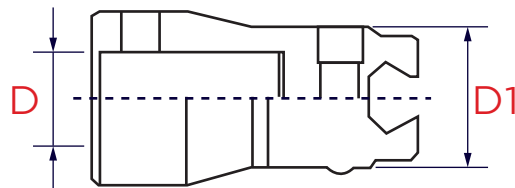
D	L	L1	d	Code No. L	Code No. R
15	70	30	10	10011570L	10011570R
18	70	30	10	10011870L	10011870R
20	70	30	10	10012070L	10012070R
22	70	30	10	10012270L	10012270R
25	70	30	10	10012570L	10012570R
26	70	30	10	10012670L	10012670R
30	70	30	10	10013070L	10013070R
35	70	30	10	10013570L	10013570R
40	70	30	10	10014070L	10014070R



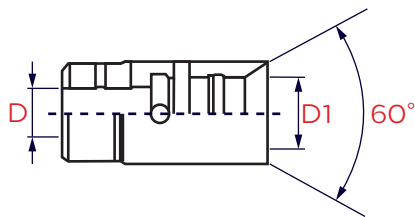
Very wide range of custom drills
It is possible to order custom dimension
It is possible to order custom shank

Boring machines replacement chucks

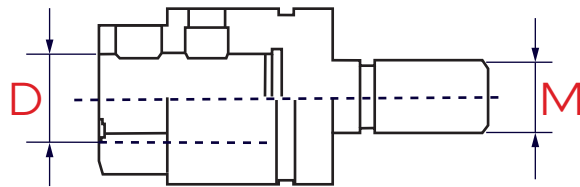
On automatic boring machines, portable boring machines,



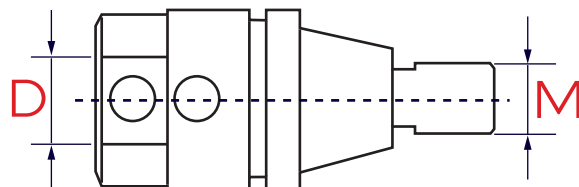
Type	D	D1	Code No.
A	10	15	58011000



Type	D	D1	Code No.
B	10	12	58021012
B	10	14	58021014



Type	D	D1	Code No. L	Code No. R
C	10	M8	58031008L	58031008R
C	10	M10	58031010L	58031010R

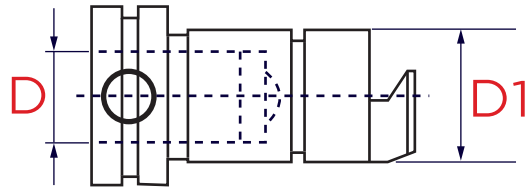


Type	D	D1	Code No. L	Code No. R
D	10	M8	58041008L	58041008R
D	10	M10	58041010L	58041010R

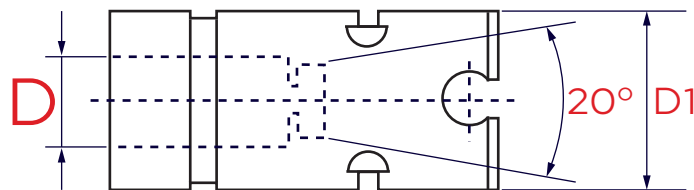


Boring machines replacement chucks

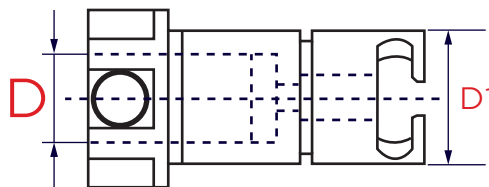
On automatic boring machines, portable boring machines,



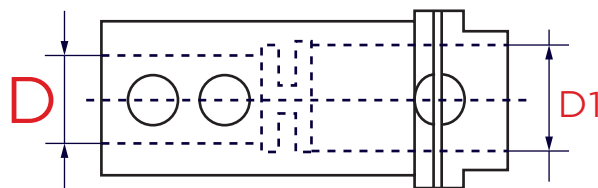
Type	D	D1	Code No.
E	10	15	58051000



Type	D	D1	Code No.
F	10	20	58061000



Type	D	D1	Code No.
G	10	15	58071000

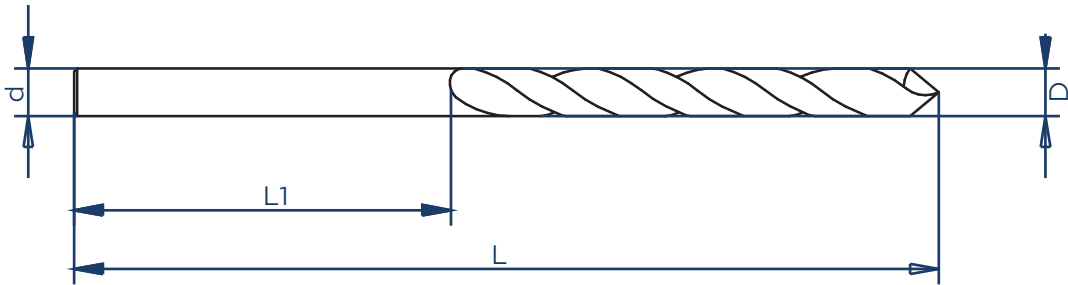


Type	D	D1	Code No.
H	10	15	58081000



Twist drills with solid carbide body

On automatic boring machines, portable boring machines,
2 V-point cutting edge .



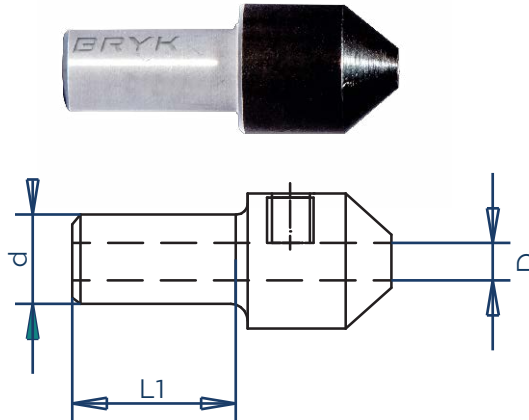
D	L	L1	d	Code No. L	Code No. R
3	55	27	3	4042005	4042006
3,5	55	27	3,5	4042009	4042010
4	55	27	4	4042011	4042012
5	55	27	5	4042013	4042014



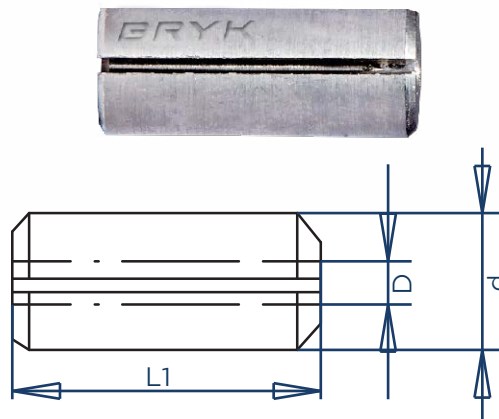
Very wide range of custom drills
It is possible to order custom dimension

Drills adapters and bushings

On automatic boring machines, portable boring machines.



D	L1	d	Code No.
3	27	10	4043011
3,5	27	10	4043011
4	27	10	4043011
5	27	10	4043013



D	L1	d	Code No.
3	27	10	4044011
3,5	27	10	4044011
4	27	10	4044011
5	27	10	4044013

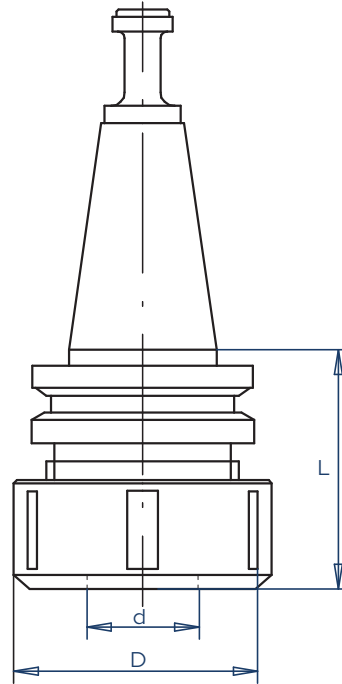


PART V HOLDERS COLLECTS



Chuck Holder with shank ISO

ON CNC machine with automatic tool changer
for clamping tools with cylindrical shank.
DIN 69871 ISO 30



D	L	D		Code No.
50	50	2 - 20	R	B30PDX20
50	50	2 - 20	L	B30PSX20
63	57	3 - 25	R	B30PDX26
63	57	3 - 25	L	B30PSX26



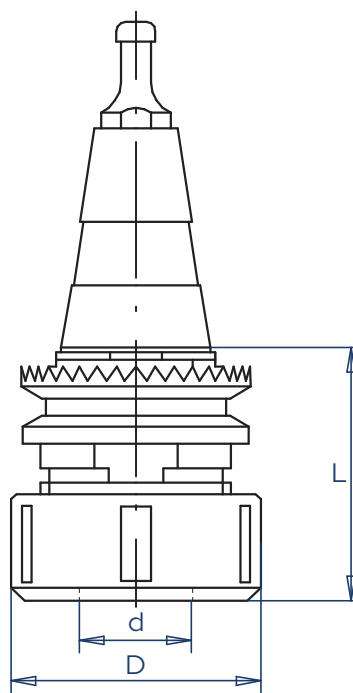
Use type collets

ER 32 d 2-20

ER 40 d 4-25

Chuck Holder with shank ISO and gear flange

ON CNC machine with automatic tool changer
for clamping tools with cylindrical shank.
ISO 30



D	L	D		Code No.
50	55	2 - 20	R	S30PDX20
50	55	2 - 20	L	S30PSX20
60	72	3 - 25	R	S30PDX25
60	72	3 - 25	L	S30PSX25

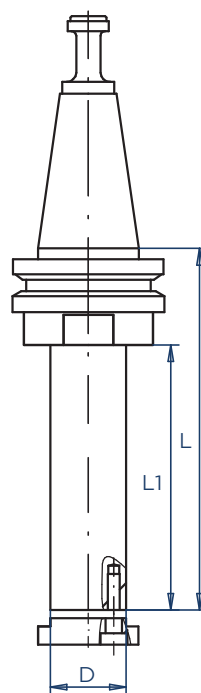


Use type collets

- ER 32 d 2-20
- ER 40 d 4-25

Mounting arbors with shank ISO

ON CNC machine with automatic tool changer
For precise mounting of tool with bore
ISO 30



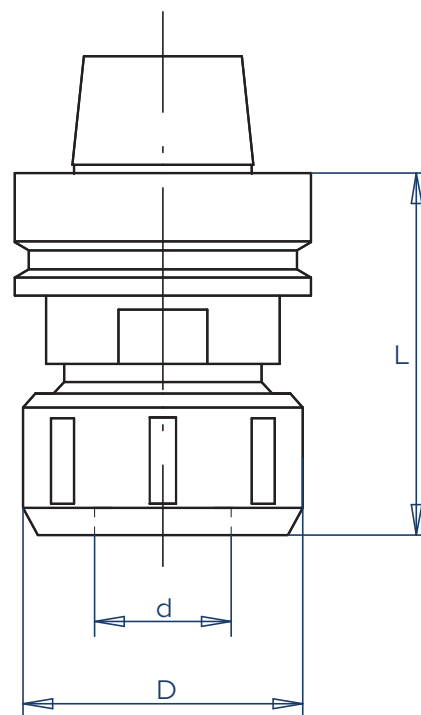
D	L1	L	Code No.
20	70	115	I30APF20/70
30	70	115	I30APF30/70
30	80	125	I30APF30/80
30	100	145	I30APF30/100
30	150	195	I30APF30/150
35	70	115	I30APF35/70
35	80	125	I30APF35/80
35	100	145	I30APF35/100
35	150	195	I30APF35/150



It is possible to order custom shank

Chuck Holder with shank HSK63F

ON CNC machine with automatic tool changer
for clamping tools with cylindrical shank.
DIN 69893 HSK63F



D	L	d		Code No.
50	71	2 - 20	R	H6FPDX20
50	71	2 - 20	L	H6FPSX20
63	78	3 - 25	R	H6FPDX26
63	78	3 - 25	L	H6FPSX26
60	76	3 - 25	R	H6FPDX25
60	76	3 - 25	L	H6FPSX25



Use type collets

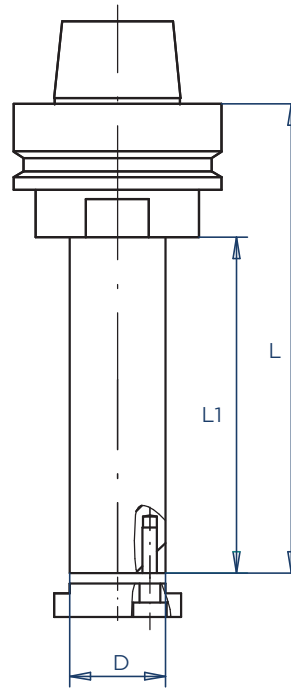
ER 32 d 2-20
ER 40 d 4-25
EO d 4-25

Mounting arbors with shank HSK63F

ON CNC machine with automatic tool changer.

For precise mounting of tool with bore

DIN 69893 HSK63F



D	L1	L	Code No.
20	70	115	H6FAPF20/70
30	70	115	H6FAPF30/70
30	80	125	H6FAPF30/80
30	100	145	H6FAPF30/100
30	150	195	H6FAPF30/150
35	70	115	H6FAPF35/70
35	80	125	H6FAPF35/80
35	100	145	H6FAPF35/100
35	150	195	H6FAPF35/150
40	70	115	H6FAPF40/70
40	80	125	H6FAPF40/80
40	100	145	H6FAPF40/100
40	150	195	H6FAPF40/150

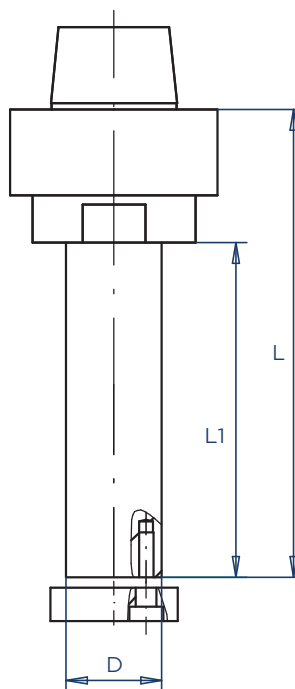


It is possible to order custom shank

Mounting arbors with shank Weinig HSK

ON Weinig machine.

For mounting of tool with bore.



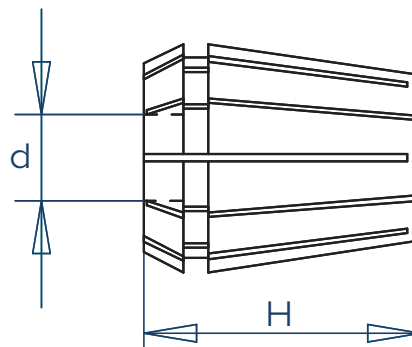
D	L	L1	Code No.
30	100	115	W6EAPF30/100
30	150	165	W6EAPF30/150
30	200	215	W6EAPF30/200
30	250	265	W6EAPF30/250
35	100	115	W6EAPF35/100
35	150	165	W6EAPF35/150
35	200	215	W6EAPF35/200
35	250	265	W6EAPF35/250
40	100	115	W6EAPF40/100
40	150	165	W6EAPF40/150
40	200	215	W6EAPF40/200
40	250	265	W6EAPF40/250



It is possible to order custom shank

Collets ER32

For chuck holder

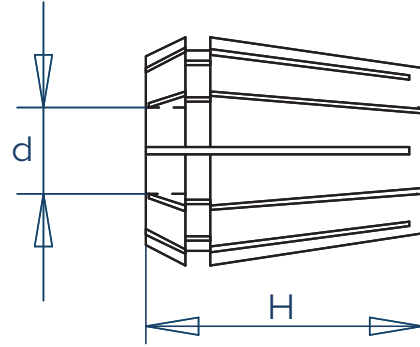


D	d	H	Code No.
33	3-2	40	932ER030
33	4-3	40	932ER040
33	5-4	40	932ER050
33	6-5	40	932ER060
33	7-6	40	932ER070
33	8-7	40	932ER080
33	9-8	40	932ER090
33	10-9	40	932ER100
33	11-10	40	932ER110
33	12-11	40	932ER120
33	13-12	40	932ER130
33	14-13	40	932ER140
33	15-14	40	932ER150
33	16-15	40	932ER160
33	17-16	40	932ER170
33	18-17	40	932ER180
33	19-18	40	932ER190
33	20-19	40	932ER200



Collets ER40

For chuck holder

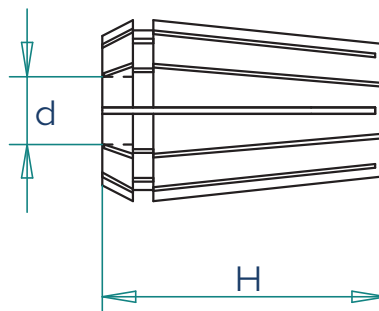


D	d	H	Code No.
41	4-3	46	940ER040
41	5-4	46	940ER050
41	6-5	46	940ER060
41	7-6	46	940ER070
41	8-7	46	940ER080
41	9-8	46	940ER090
41	10-9	46	940ER100
41	11-10	46	940ER110
41	12-11	46	940ER120
41	13-12	46	940ER130
41	14-13	46	940ER140
41	15-14	46	940ER150
41	16-15	46	940ER160
41	17-16	46	940ER170
41	18-17	46	940ER180
41	19-18	46	940ER190
41	10-19	46	940ER200
41	21-19	46	940ER210
41	22-21	46	940ER220
41	23-22	46	940ER230
41	24-23	46	940ER240
41	25-24	46	940ER250



Collets E0

For chuck holder DIN6388



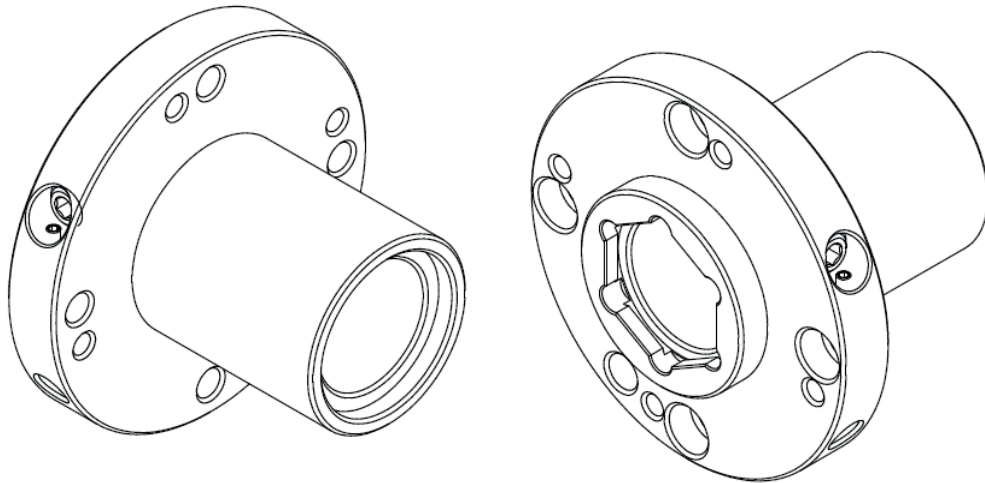
D	d	H	Code No.
35	4-3	52	925EO040
35	5-4	52	925EO041
35	6-5	52	925EO042
35	7-6	52	925EO043
35	8-7	52	925EO044
35	9-8	52	925EO045
35	10-9	52	925EO046
35	11-10	52	925EO047
35	12-11	52	925EO048
35	13-12	52	925EO049
35	14-13	52	925EO050
35	15-14	52	925EO051
35	16-15	52	925EO052
35	17-16	52	925EO053
35	18-17	52	925EO054
35	19-18	52	925EO055
35	20-19	52	925EO056
35	21-20	52	925EO057
35	22-21	52	925EO058
35	23-22	52	925EO059
35	24-23	52	925EO060
35	25-24	52	925EO061



Hydro Grips

Available on request.

Specify the type and dimension on shank.

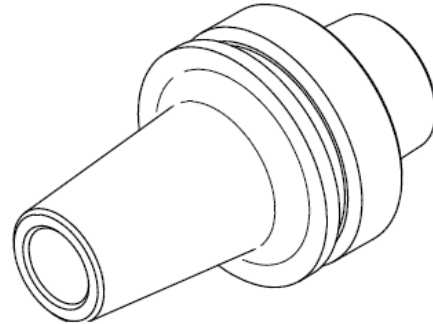
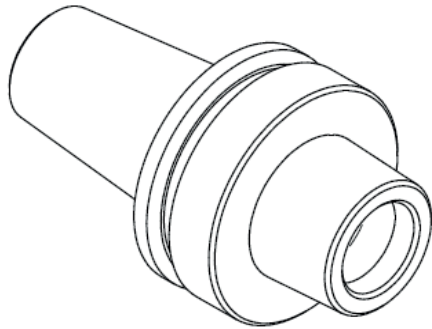


CNC

Termo Grips

Available on request.

Specify the type / type of handle in detail





PART VI
TECHNICAL INFORMATIONS
& TOOL SELECTION

The course and results of the cut depend on:

- cutting conditions, ie factors related to the machine, tool, work piece;
- cutting parameters:

Geometric, geometry-related tool teeth and sectional cut

And technological, to which it belongs

V_c - Cutting speed,

V_f - Feed rate

A_p - Cut layer

Z - Number of teeth

$V_c = \pi \cdot D \cdot n / 1000 \cdot 60$ (m s⁻¹) - cutting speed

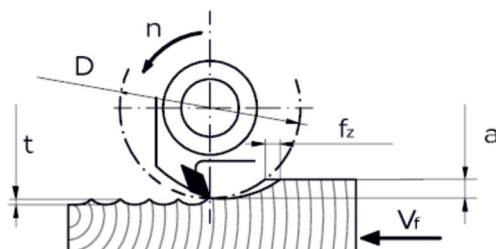
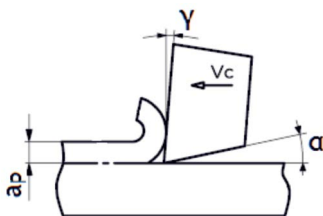
$N = V_c / \pi \cdot D \cdot 1000 \cdot 60$ (l rpm) - RPM

$V_f = f_z \cdot n \cdot z / 1000$ (mm) - feed rate

$F_z = V_f / n \cdot z \cdot 1000$ (mm / tooth) - feed rate /1 teeth

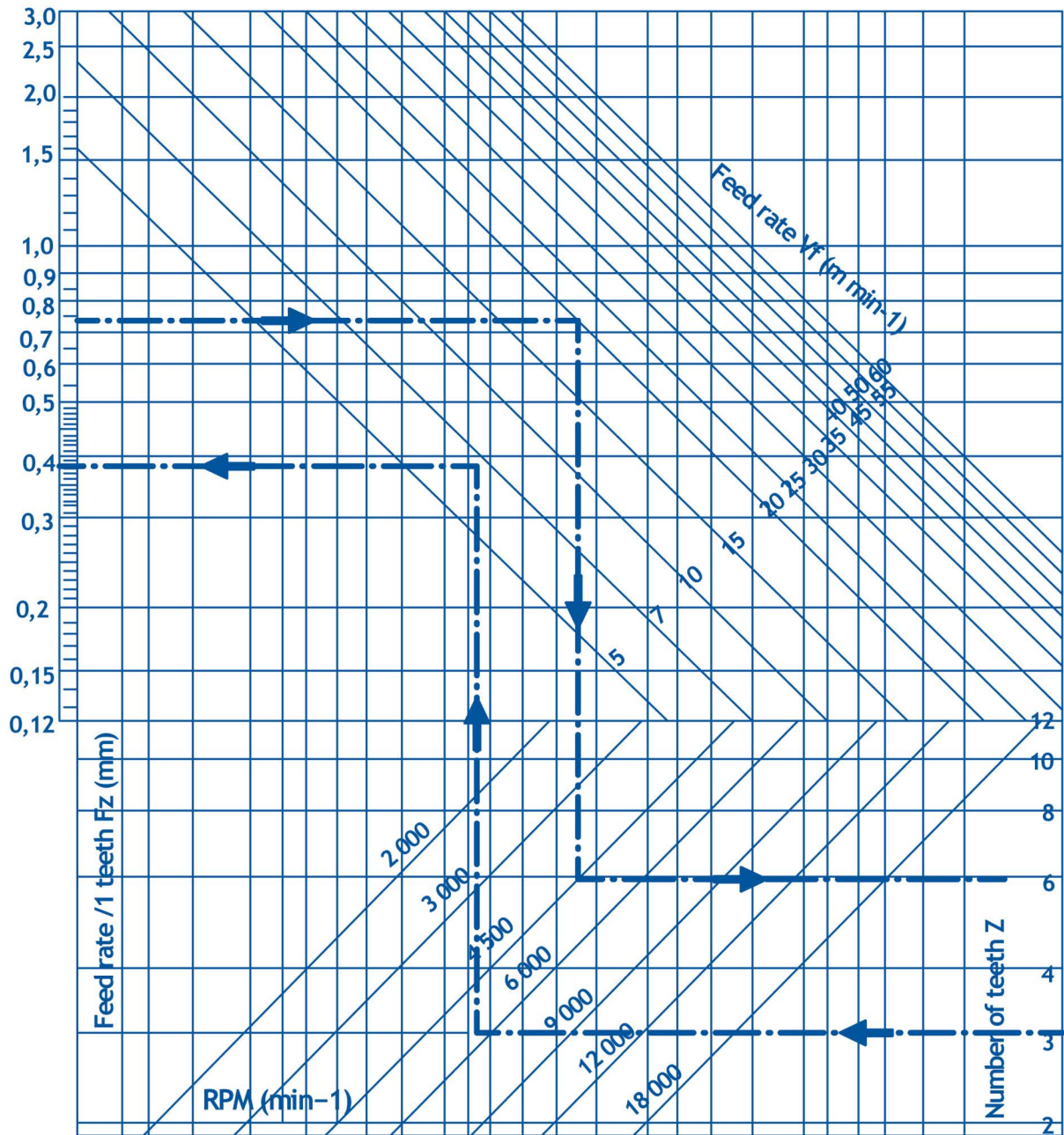
$F = V_f / n \cdot 1000$ (mm) -feeding

$T = f_z \cdot \sqrt[4]{D}$ (mm) - channel depth



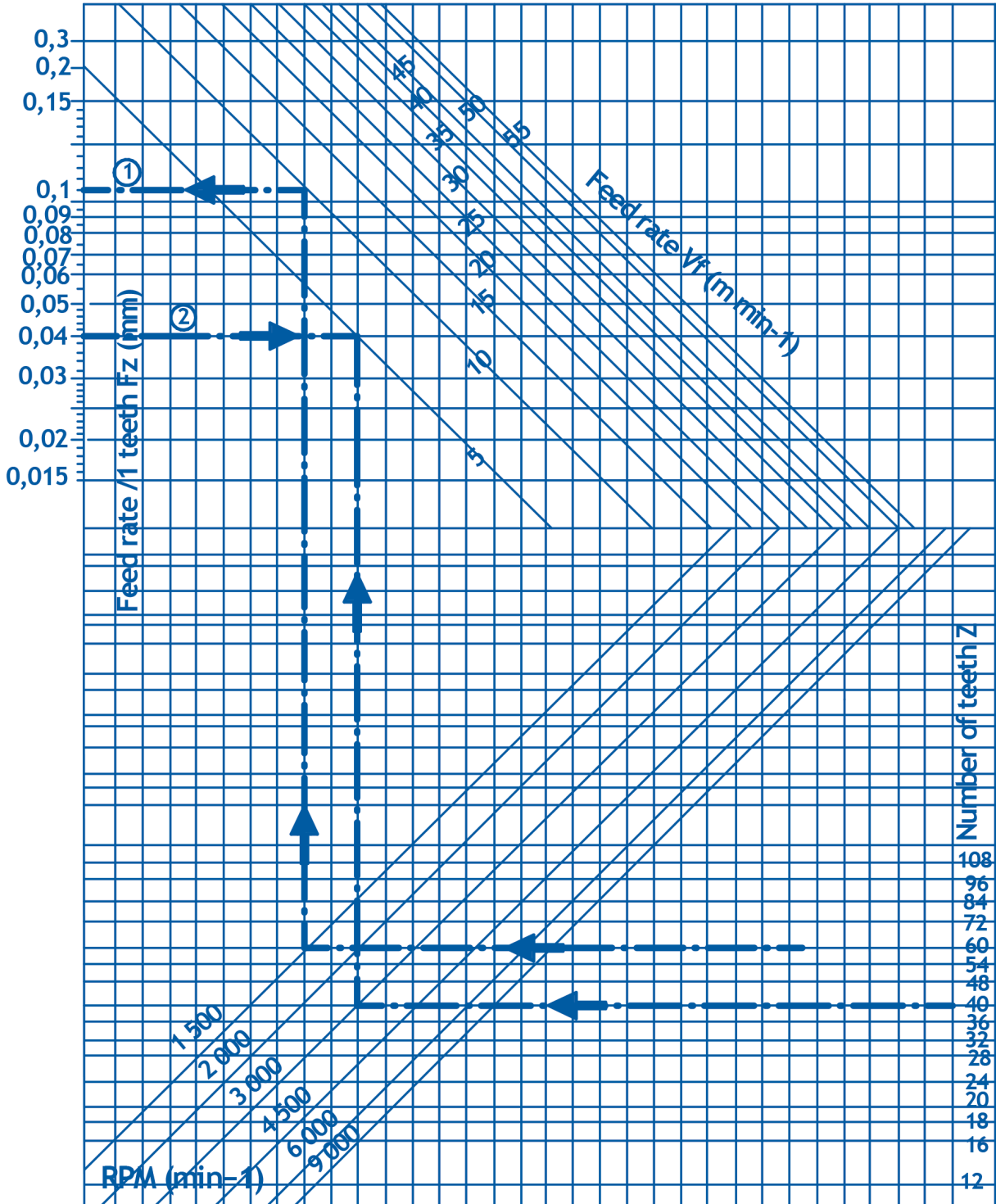
Specify the feed rate / 1 teeth in relation to RPM, feed rate, number of teeth

Part 1



Specify the feed rate / 1 teeth in relation to RPM, feed rate, number of teeth

Part 2



Tool selection

CUSTOMER: _____

ADDRESS: _____

CONTACT PERSON: _____

TEL. NO. _____

Mail adress _____

BRYK responsible person: _____

Machine data :

Machine : _____ Type: _____

Flange Ø[mm] _____ RPM [min-1]: _____

Clamping System _____

Spindle Ø [mm]: _____

Spindle position Horizontal Vertical
 Tilted Degree of tilt [°] _____

Type of feed : MEC MAN
 Feed rate [m/min]: _____

Machining data:

Workpiece material : _____

Mode of application: Against feed With feed

Cutting quality: Rough cut Finish cut

Cutting direction : With grain Across grain

Contour Grooving

Rabbeting Rauding

Drilling Through Drilling Dowel

Tool data :

Type of tool : _____ Code No. _____

Cutting material : HW PKD

Important dimensions :

Ø D [mm]: _____ Ø B [mm]: _____

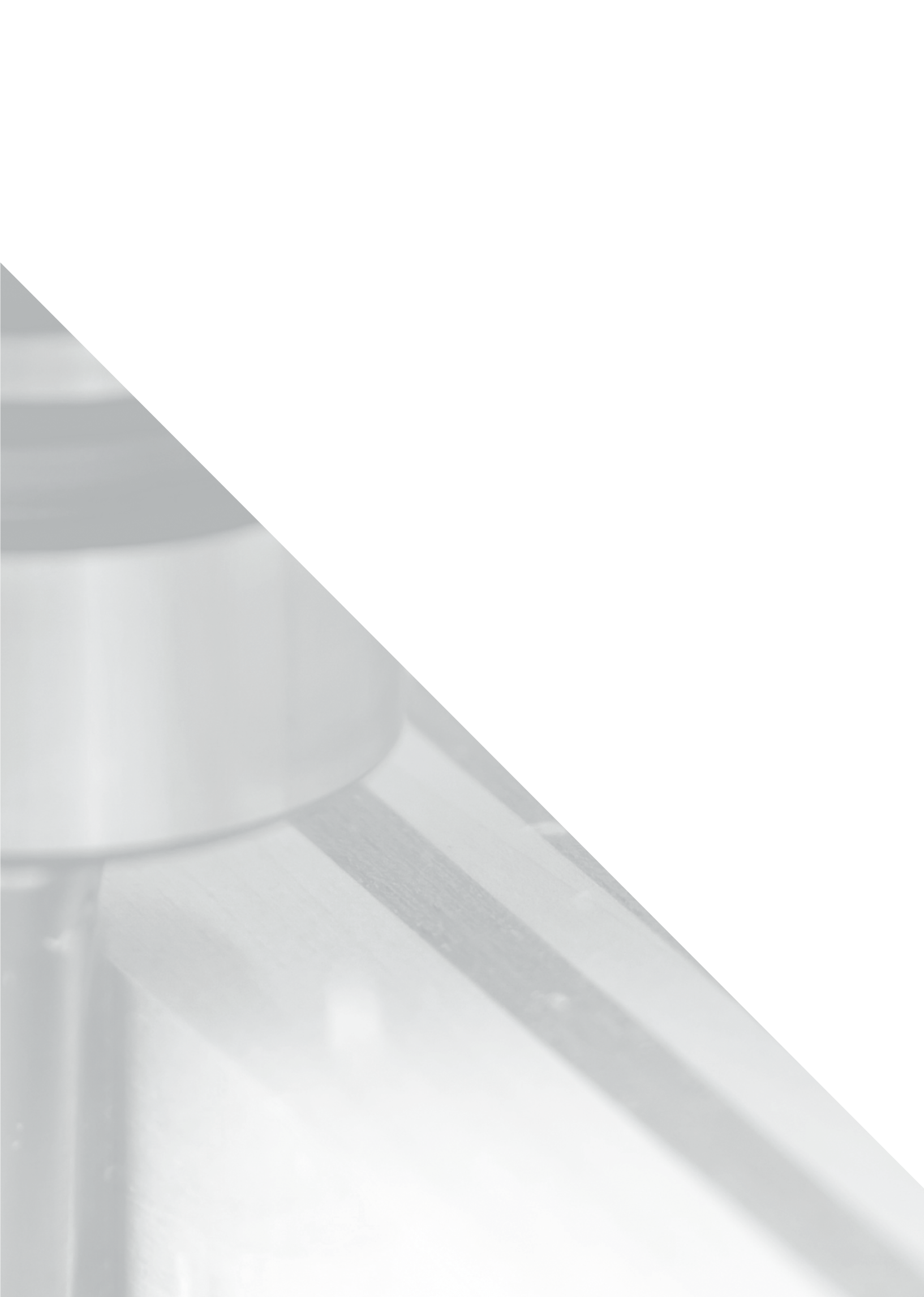
Ø d [mm]: _____ Ø b [mm]: _____

Ø d1 [mm]: _____ Ø L [mm]: _____

Ø d2 [mm]: _____ Ø L1 [mm]: _____

Ø L1 [mm]: _____







P.P.U.H. BRYK 37-124 Kraczkowa 1663a

W: www.bryk.biz

E: biuro@bryk.biz

T: 17 225 04 77
17 225 86 75

NIP: 9211620945

REGON: 690716066